

**TYPICAL FINISHES:**

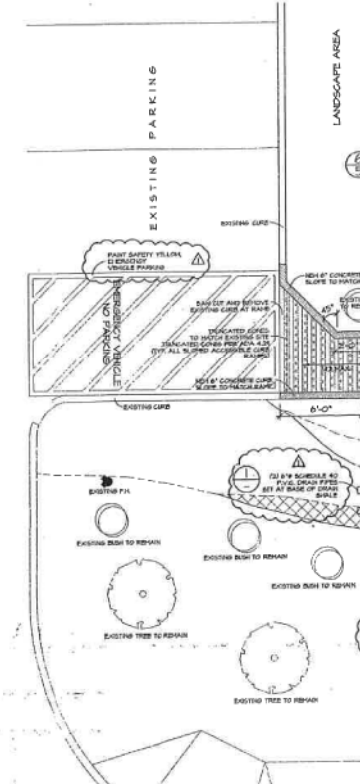
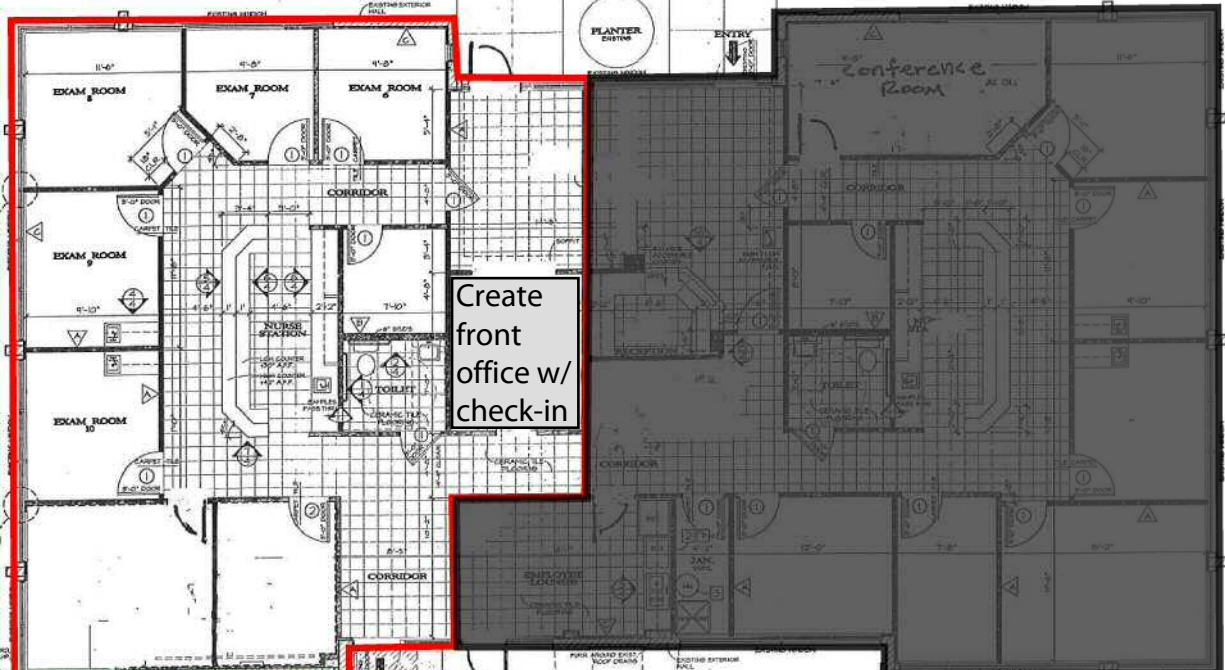
- CARPET:** COMMERCIAL GRADE 20 OZ. BLUE DOWN OVER EXISTING SLAB. COLOR SELECTED BY OWNER.
- TILE:** 12" X 12" CERAMIC TILE FLOORING IN RECEPTION HALLS, NURSE STATION, DRUG ROOM AND RESTROOMS. COLOR SELECTED BY OWNER.
- VENT:** COMMERCIAL GRADE SHEET VINYL BLUE DOWN OVER EXISTING SLAB. CONTRACTOR TO FILL VENTS, GRADES, & FLOOR LEVEL, PRIOR TO INSTALLATION.
- BASE:** 6" CERAMIC TILE BASE AT TOILET ROOMS, 4" FIBER BASE COMMERCIAL GRADE PROFILE & COLOR AS SELECTED BY OWNER.
- HALLS:** 20'0" OFFSET, 1/4" LIGHT ORANGE PEARL TYPHON PROVIDE TWO COATS LATEX SEMI-GLOSS AT TOILET ROOMS, PAINT EGGSHELL WHITE.
- HANDSCOT TILE:** AT RESTROOM 507 ASFF 4"X4" CERAMIC TILE & TRIM COLORS TO BE SELECTED BY OWNER.
- COUNTER:** PLASTIC LAMINATE COUNTERTOP, SPLASH & CABINETS W/ CORNER HIRE PANEL. COLOR AS SELECTED BY OWNER.
- GRANITE COUNTER:** RECEPTION AND NURSE COUNTER, 1" SLAB GRANITE WITH FULL RADIUS EDGE DETAIL. COLOR AS SELECTED BY OWNER.
- GLASS:** 1/4" GLASS, TINTED AS REQUIRED (CLEAR).
- DOORS:** SCH 1 WHITE BIRCH VENEER, STAINED GRADE SELECTED BY OWNER.
- CEILING:** 2" X 4" SUSPENDED ACoustic LAY-IN CEILING "AMBROSIO" FINISHED PANEL.  
2" X 2" "SECOND LOOK" TILE AT RECEPTION HALLS & NURSE STATION.  
CEILING HEIGHT: 4'-0" TYPICAL. TOILET ROOM: 8'-0" SEE CEILING PLAN.

NOTE: FLOORHEAD RATINGS FOR INTERIOR FINISHES SHALL NOT EXCEED 200 AS PER SECTION 0201 IN THE I.D.C.  
ALL INSULATION MATERIALS, EXCEPT SPACINGS SUCH AS ROOF - CEILING AND FLOOR-FLOOR SPACINGS OR ATTIC INSULATION HAVE A FLOORHEAD RATING NOT TO EXCEED 20 AND A SHORER DENSITY NOT TO EXCEED 450 WHEN TESTED IN ACCORDANCE WITH UL 263.

TABLE 202.4 IN THE I.D.C.

Approximately 1,832 Sq. Ft.

Create front office w/ check-in



**SYMBOLS:**

- NON-BEARING PARTITION: DATA 1 SCHEDULE, SEE SCHEDULE
- EXISTING EXTERIOR HALL
- DOOR
- INTERIOR ELEVATION
- DETAIL
- PARTITIONS, TYPICAL SEE SCHEDULE
- NICHE

**PARTITION SCHEDULE:**

- EXTERIOR PARTITION HALL TO 4' ABOVE HIGHEST ADJACENT CEILING WITH 2" BY 2" BY 1/2" GYP BOARD EA. SIDE (SEE PART SCHEDULE) WHERE SHOWN: STD. SIZE: 3'-0" X 8'-0" SPACING: 24" W/ 25 GA. METAL STUDS
- INTERIOR PARTITION HALL TO 4' ABOVE HIGHEST ADJACENT CEILING W/ 2" BY 2" BY 1/2" GYP BOARD. (SEE PART SCHEDULE) WHERE SHOWN: STD. SIZE: 3'-0" X 8'-0" SPACING: 24" W/ 25 GA. METAL STUDS
- EXISTING HACHERY HALL, 1/2" INS. 20' FLOORING WITH SUB-STRAN BOWND INSIDE FACE, (SEE PART SCHEDULE) WHERE SHOWN: STD. SIZE: 1'-0" X 8'-0" SPACING: 24" W/ 25 GA. METAL STUDS

**FLOOR PLAN:**

SCALE: 1/4" = 1'-0" NORTH

**KEYNOTES:**

- 1 NEW RECESSED ELECTRICAL PANEL.
- 2 NEW TELEPHONE BOARD - 40" SQUARE X 1/2" PLYWOOD - 1/2" A.F.F.
- 3 WATER HEATER. SEE PLUMBING.

AS-BUILTS

NO.	DATE	REVISIONS



**DeGroot Medical Offices**  
-PALM VALLEY PROFESSIONAL PLAZA-  
BUILDING 12:  
N.W.C. THOMAS / LITCHFIELD RD. GOODYEAR, ARIZ.

**architects & planners international, inc.**  
4717 E. McDowell suite 100 Phoenix, Arizona 85008 (602) 773-4202

Drawn by: B.A.J.  
Date: 01-11-01  
Job no.: 0620